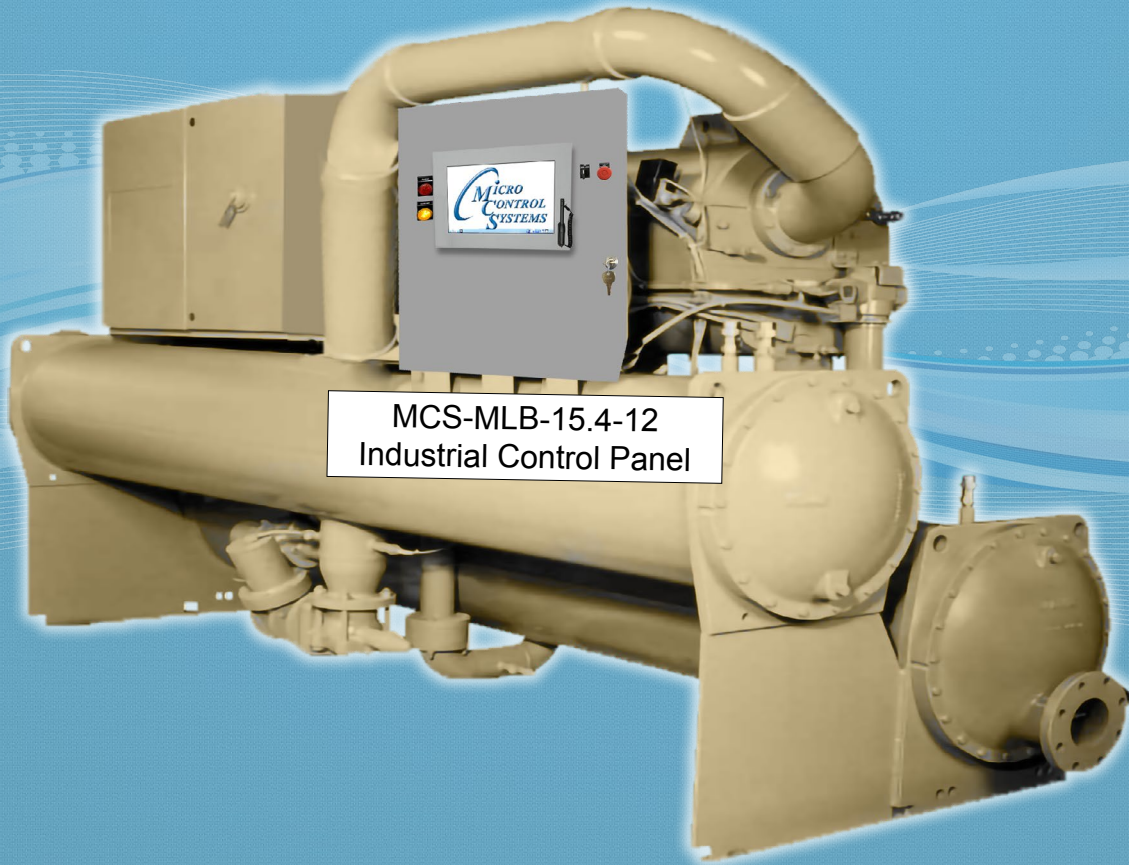




*MCS Total
Solutions for all your
HVAC/R Control Needs*



MCS-MLB-15.4-12
Industrial Control Panel

RTHA / RTHB - 12 CONTROLS UPGRADE

This brochure describes a standard upgrade package for the RTHA / RTHB Chiller.

Each control upgrade installation is unique. It may be necessary to add additional options to the standard upgrade as described in this brochure.

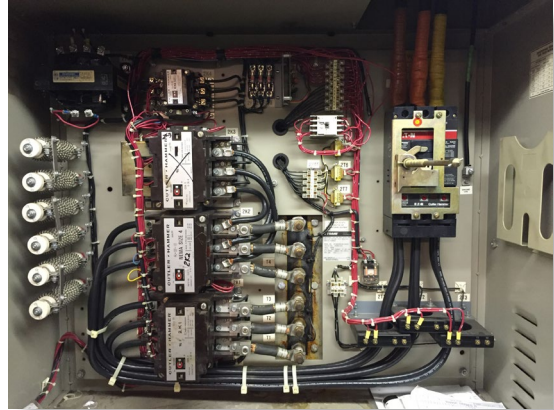
Fill out the brief questionnaire in the back of this brochure and forward to your sales representative for an estimate.



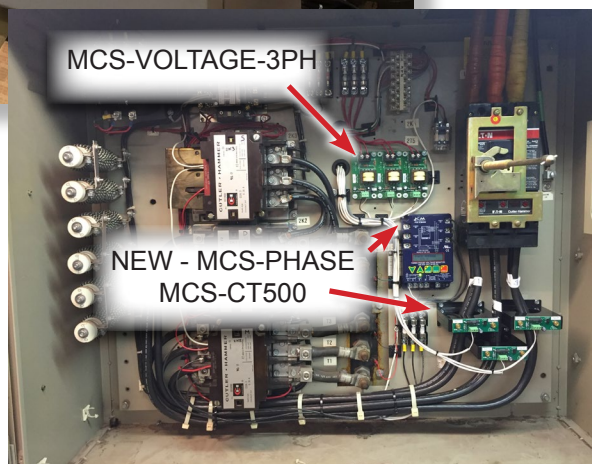
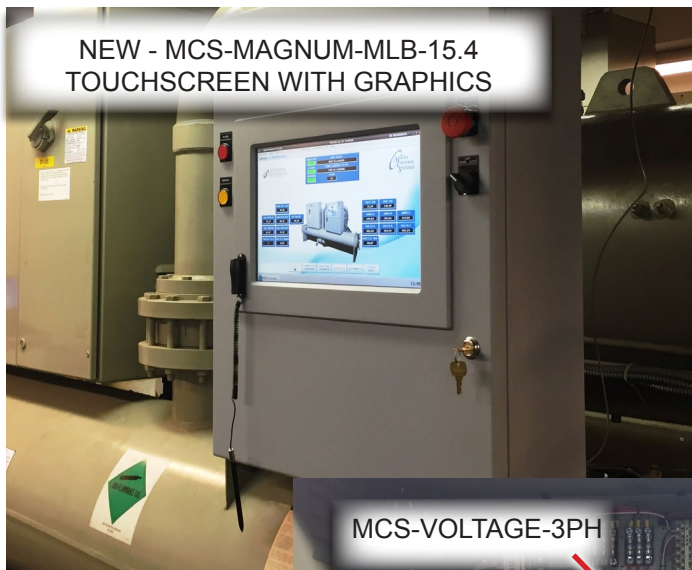
RTHA/RTHB UPGRADE PHOTOS



Prior to Upgrade - old controls



Control Upgrades Made



RTHA/RTHB Industrial Control Panel



Part #
MCS-MAGNUM-MLB-15.4-12*

Description

The **MCS-MAGNUM-MLB-15.4-12 Industrial Control Panel** is made of powder coated aluminum for durability and longevity. A left hand swing door is mounted with three eight-inch hinges for strength. A key lock is provided for security on the door while still giving easy access of the display. This panel is intended for use in an environment protected from the weather.

The **MCS-TOUCH-15.4** capacitive touchscreen interface designed to simplify user access with the MCS-Magnum and MicroMag utilizing MCS-Connect to provide both graphics and service mode access to technicians. Input method: Finger, Stylus and **Glove.

Highly accurate and does not require calibration - easy to clean glass surface. Works outdoors, bright screen, water resistant, Exceptional Optics - 1280x800 resolution, sharp and vibrant images.

MCS-TOUCH-15.4 comes preloaded with the MCS-CONNECT program that allows you to view the 'unit's status', 'extended history', 'alerts', 'alarms', setpoints, and more, all in a user-friendly graphic format. The **MCS-TOUCH-15.4-12** can connect up to 60 MCS controllers and supports RS485 or Ethernet networking.

Power is supplied using a MCS-12V power supply.

Panel includes the following; 20A, and a 5A Single-Pole Circuit Breaker, a 5 port 10/100/1000 Ethernet Workgroup Switch Industrial rated, Red Alarm Indicator, Yellow Warning Indicator, Emergency Stop Switch and 3 Position Run/Stop Selector Switch.

There is also an electrical outlet for laptop plug-in power at the panel.

SHIELDWIRE-GROUNDING multi-terminal connectors are included to eliminate stray electrical current, thereby helping to reduce line noise form the sensors to the controller.

This panel is intended for use in an environment protected from the weather.

Specifications

Certification.....UL508A

NEMA Rating – Type 1 Control Panel- IP20 Rating

Enclosure is intended for indoor use primarily to provide a degree of protection against contact with the enclosed equipment and is not protected from liquids.

Industrial Control Panel

Dimensions..... 23.5”w x 31.15”h x 8”d

Mounting Holes..... Mounts with four pre drilled 15/32” holes

Rated Voltage (Standard)..... 120VAC or 230VAC

Phase / Frequency..... 1 Phase / 60Hz

Full Load Current(approx) ... 40A at 120VAC or 20A at 240VAC

Short Circuit Current Rating . 10kA

Temp. Range for Control Panel & Touch Screen

Operating Temperature..... -4°F to 158°F (-20°C to 70°C)

Operating Humidity..... 0-95% Non-Condensing

Storage Temperature -4°F to 158°F (-20°C to 70°C)

MCS-MAGNUM Controller

Microprocessor Zilog eZ80 Acclaim! @ 50mhz

Sensor Inputs (SI)..... 12 inputs 0-5vdc (10-bit A/D)

Digital Inputs..... 4 inputs 0 or 5vdc only

Relay Outputs (RO)..... 10 outputs 6.3amps @ 230vac

Analog Outputs (AO)..... 4 outputs 0-10vdc

Printed Circuit Board Six layer with separate power and ground planes

Input Power (Standard) 12 vdc Regulated Power Supply

Minimum (Brown in) 9.44 vdc

Amp Draw (Loaded) 857.0 mA

MCS-I/O Comm Port 1 @ 38,400 baud

RS-485 Comm Port 1 @ 19,200 baud

Ethernet..... 10/100 Mbps Ethernet

Real Time Clock Battery backup

Power Detection Automatic power fail reset

MCS-SI-BASE Expansion Board

Sensor Inputs (SI)..... 16 inputs 0-5vdc (10-bit A/D)

Analog Outputs (AO)..... 4 outputs 0-10vdc

MCS-I/O Comm Port 1 @ 38,400 baud

MCS-TOUCH-15.4 - Capacitive Touchscreen

LCD Screen..... 15.4” Diagonal (Aspect Ratio 16:10)

Dimensions..... 17”L x 12.11”W x 3.228”H

1280 x 800 Resolution

NEMA 4 IP66 rated

Touchscreen Surface..... UV Degradation Protection

Operating Temperature -22°F to 176°F (-30°C to +80°C)

Operating Humidity..... 90 %RH (Non Condensing)

Storage Temperature -22°F to 176°F (-30°C to +80°C)

Motherboard-Rev 4.0 Freescale i.MX6 Dual Core 800mhz

2Gb of 512mhz DDR3 RAM memory

16Gb of eMMC Flash memory

10m/100m/1G Ethernet

1 Micro-SD Slots

2 USB Host 2.0

Real Time Clock (RTC) w/ Battery

3 RS485 communication ports

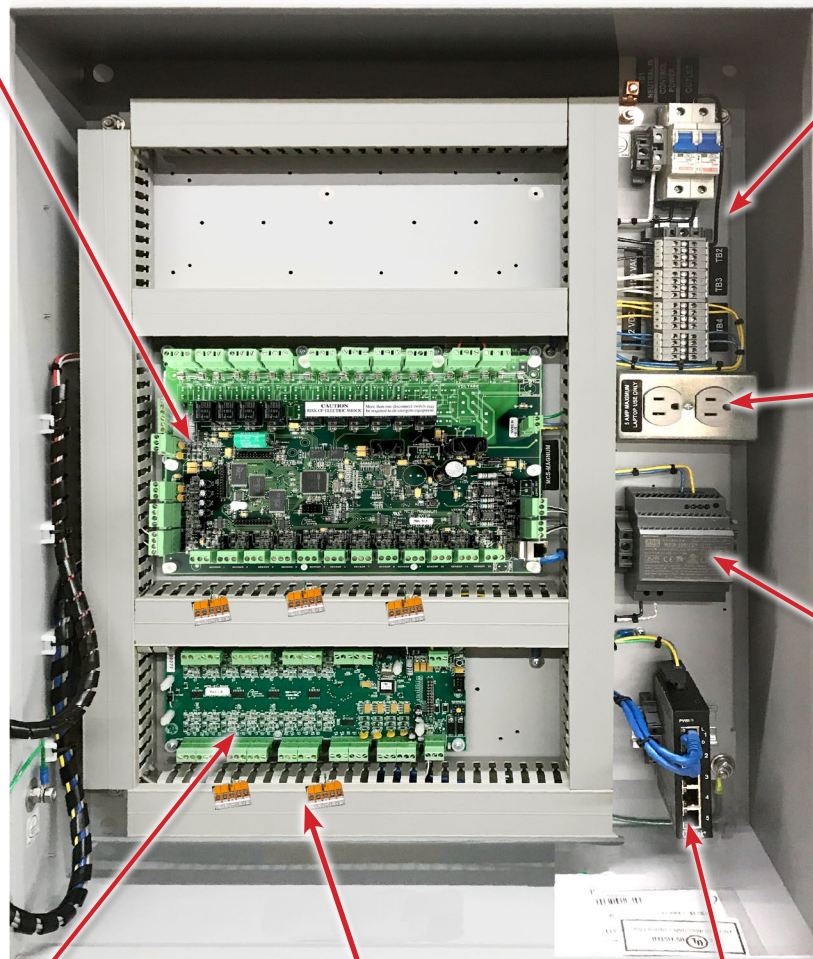
Touchscreen Surface..... UV Degradation Protection

Crossover Cable (orange) .. can be used for connecting

MCS Touchscreen direct to MCS-MAGNUM or to a Laptop

RTHA/RTHB Industrial Control Panel

MCS-MAGNUM-N-12



Terminal Blocks
to land lines and
neutrals
for devices

Electrical outlet for
Laptop plug-in
power at the panel

12 Volt Power Supply

Five (5) port Ethernet Switch

MCS-SI-BASE
Expansion Board

SHIELDWIRE-GROUNDING
multi-terminal connectors



INDUSTRIAL CONTROL PANEL

Model: MCS-CENTRIFUGAL-12
Serial: 000000
Rated Voltage: 120 Vac
Phase / Frequency: 1 Phase / 60 Hz
Full Load Current: 20A
Short Circuit Current Rating: 10kA
Drawing Number: 00000-01
Enclosure: Type 1

UL File E511647 Made in USA



ENCLOSED INDUSTRIAL CONTROL PANEL
NO. DXXXXXXX

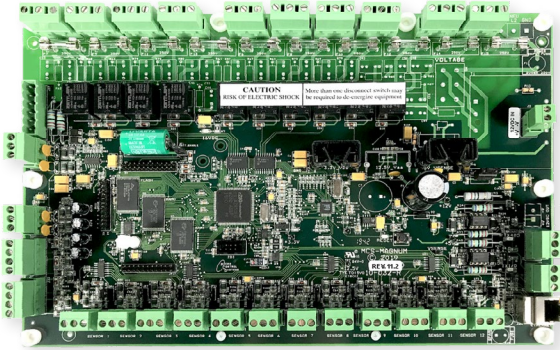
UL 508A Certified Industrial Control Panel

Benefits of selecting an Industrial Control Panel that carries the UL 508A certification include:

- UL 508A certification provides the inspection authority and your customer evidence that the control panel complies with nationally recognized safety standards. These standards ensure public safety and provide assurances that the Industrial Control Panel is compliant with national and local electrical codes.
- For a control panel to carry the UL 508A Listing Mark, the panel must contain only UL recognized and listed components. The UL Mark on a component means that UL has evaluated and tested samples of this component and has concluded that they meet the UL requirements. This protects the quality and integrity of the enclosure and provides guarantee of safe performance.

RTHA/RTHB Industrial Control Panel

MCS-MAGNUM-N-12



The **MCS-MAGNUM-N-12** is a durable microprocessor based controller designed for the hostile environments in the HVAC/R industry. It is designed to be the primary manager of the package it is controlling.

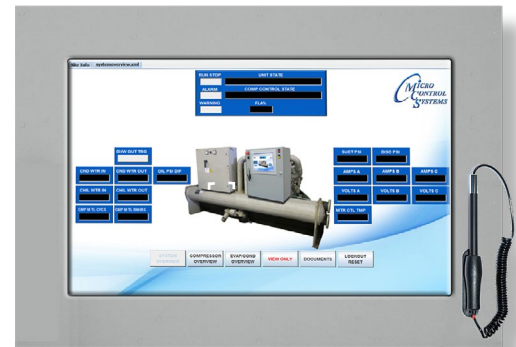
The Magnum provides flexibility with set points and control options that can be selected prior to commissioning a system or when the unit is live and functioning. The TouchScreen and MCS-CONNECT provide a clear and simple language that informs the user as to the status of the controller.

Touchscreen

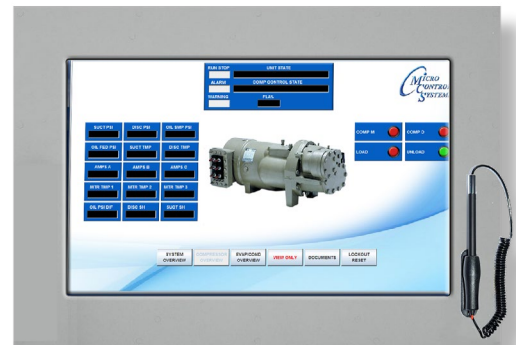
The **MCS-TOUCH-15.4** capacitive touchscreen interface designed to simplify user access with the MCS-Magnum and MicroMag utilizing MCS-Connect to provide both graphics and service mode access to technicians. Input method: Finger, glove, stylus.

Highly accurate and does not require calibration - easy to clean glass surface. Works outdoors, bright screen, water resistant, Exceptional Optics - 1280x800 resolution, sharp and vibrant images.

MCS-TOUCH-15.4 comes preloaded with the MCS-CONNECT program that allows you to view the 'unit's status', 'extended history', 'alerts', 'alarms', setpoints, and more, all in a user-friendly graphic format.



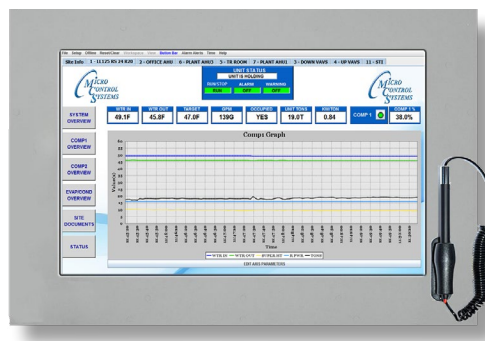
SYSTEM OVERVIEW



COMPRESSOR OVERVIEW SCREEN



EVAPORATOR CONDENSER OVERVIEW SCREEN



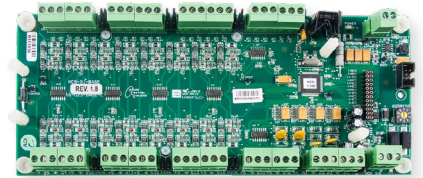
OPTIONAL 'GRAPHS OVERVIEW SCREEN IN REAL TIME'

RTHA/RTHB Industrial Control Panel

MCS-SI-BASE

The **MCS-SI-BASE** provides a flexible and cost effective way to allow sensor input and analog output expansion for the **MCS MAGNUM**. Each MCS-SI-BASE has a stand-alone microprocessor which communicates with the MCS MAGNUM over the MCS-I/O port at 38,400 baud. All data is check summed with auto error correction. Because communication is over a RS-485 long distance two-wire differential network transmission system, the MCS-SI-BASE may be located up to 5,000 feet away.

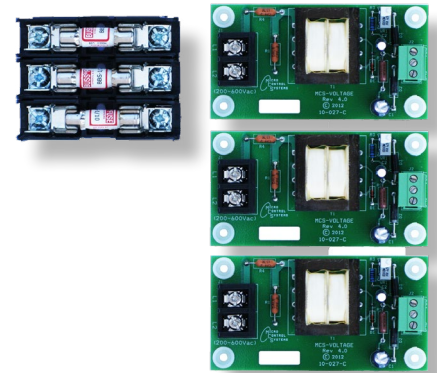
Each MCS-SI-BASE board can be powered by a 12VDC regulated power supply and has a automatic power fail reset system.



MCS-VOLTAGE-3PH

The **MCS-VOLTAGE-3PH** measures AC voltage between 200-600 AC. It is designed to monitor the voltage of each phase of the main input power to the unit.

The MCS-VOLTAGE-3PH sensor provides three separate DC voltage outputs that correspond to the AC voltage it's measuring.



MCS-PHASE

The **MCS-PHASE** is a programmable 3-phase line voltage monitor with 25-fault memory, high temperature LCD display, easy setup and clear diagnostic readout of system faults. The MCS-PHASE was specifically designed to protect motors and other 3-phase loads from premature failure and damage due to common voltage faults such as unbalance, over/under voltage, phase loss, reversal, incorrect sequencing and rapid short cycling.



MCS-PRESSURE TRANSDUCERS



The **MCS Pressure Transducers** are one of the most economical and durable options on the market for dealing with high-pressure industrial applications.

In addition to being CE and UL approved, MCS transducers are capable of surviving high vibration. They include a cavity built out of solid 17-4 PH stainless steel 1/4" SAE Female Flare fitting & Schrader valve; 7/16-20 UNF pipe thread which creates a leak-proof, all metal sealed system that makes the transducers ideal for use with rugged HVAC environments.

RTHA/RTHB Industrial Control Panel

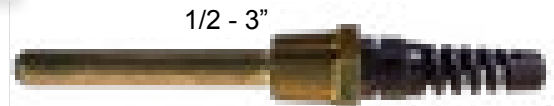
MCS T100 Temp Sensor



An extremely fast acting temperature sensor built for demanding environments. It is ideal for high moisture locations with continuous freeze and thaw cycles. The sensor is potted with a thermally conductive RTV Cure Silicon Adhesive to guarantee durability and response. Its high accuracy allows for interchangeability in the field. The large resistance range allows the use of over 1000' of cable with no noticeable effect. The MCS-T100 sensor has the ability to move from 32°F to 212°F in approximately 10 to 15 seconds.

MCS-Wells/Tubes

The MCS-WELL was designed to be used with the MCS-T100 temperature sensor, although it has other applications. It is used in the RTHA series chillers in the chilled water and condenser water lines. It comes pre-filled with heat conductive compound to aid in temperature to the sensor.



The **MCS-TUBE** can be epoxied to a discharge or suction line on the RTHA series chillers in order to obtain temperature readings without the use of a well. It was designed to be used with the MCS-T100 temperature sensor and comes pre-filled with heat conductive compound to aid in transferring temperature to the sensor.

MCS-USB-RS485



The **MCS-USB-RS485** is a USB to RS485 cable that provides a fast simple way to connect a **MCS-MAGNUM** to a Laptop or PC.

The MCS-USB-RS485 cable contains a small internal electronic circuit board, which converts USB to RS485 with LED indicators for transmit (TX=Red) and receive (RX=Green).

MCS-EPOXY

- Pre-measured resins and hardeners in one tube
- Easy to use - bonds, seals, plugs, molds and rebuilds
- No special tools needed
- Can even harden under water



- Pressure tested to 1300 psi
- Temperatures up to 500 degree F
- Color..... Gray
- Density 15.9 lb/gal (1.9 g/cc)
- Hardness (Shore D) 85
- Tensile Strength 6000 psi
- Compressive Strength 18.000 psi
- Modulus of Elasticity 6 x 105 psi
- Shear Strength 700 psi

RTHA/RTHB Industrial Control Panel

MCS-CT500



CALUS
File No: E169780



MCS-CT500 current sensor monitors current flowing to electrical equipment. The magnitude of the current is converted to a linear output voltage between 0.06 to 4.52vdc which can be read as a standard analog input signal. The signal is used by MCS micro controllers for the following:

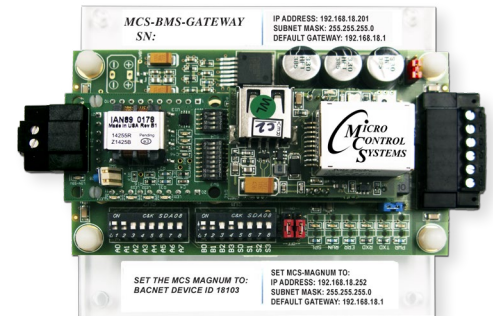
1. For slide valve control on screw machines
2. For high amp motor overload protection
3. For verification of device on / off

RTHA/RTHB Typical Options

BMS GATEWAY

The **MCS-BMS-GATEWAY** is a microprocessor based communication device that provides translation from Bacnet IP, Bacnet MSTP, Modbus IP, Lontalk, or Johnson N2 communication interface. Information that can be transmitted includes the status of control points, alarm information, digital inputs, analog inputs or setpoints.

The MCS-BMS-GATEWAY protocol is field selectable by setting jumper on the device. Using **MCS-CONFIG** and the CONFIG files for the MCS-MAGNUM, you can automatically create the CSV files that is required by the MCS-BMS-GATEWAY.



MCS-EXV-DRIVER

The **MCS-EXV-DRIVER** is used for the positioning and control of Sporlan, Alco, Carel, and Danfoss bipolar expansion valves using an analog input of 0-10 VDC (0 VDC = 0% valve opening, 10 VDC = 100% valve opening). The MCS-EXV-DRIVER also supports overdriving on full opened and full closed voltage signals. The display decimal notifies when overdriving by blinking.



MCS-SEHI

The **MCS-SEHI** are Electronically Operated Step motor flow control valves, intended for the precise control of liquid refrigerant flow. Synchronized signals to the motor provide discrete angular movement, which translates into precise linear positioning of the valve piston. Valve pistons and ports are uniquely characterized, providing improved flow resolution and performance.

The MCS-SEHI valves are easily interfaced with MCS microprocessor based controllers.



MCS RTHA/RTHB Standard Point List

Relay Outputs

#	Output Name	Type	Description
M-1	Comp M	Standard	Compressor main relay for star-delta
M-2	Comp D	Standard	Compressor transition relay for star-delta
M-3	Load	Standard	Increase compressor capacity
M-4	Unload	Standard	Decrease compressor capacity
M-5	Spare M-5	Standard	Relay output not used
M-6	Spare M-6	Standard	Relay output not used
M-7	Spare M-7	Standard	Relay output not used
M-8	Spare M-8	Standard	Relay output not used
M-9	Warning	Standard	Warning Light: unit is in a safety condition prior to a safety shutdown.
M-10	AlarmLight	Standard	Alarm Light: unit is in a safety shutdown

Sensor Inputs

#	Output Name	Type	Description
M-1	ChilWtr In	MCS-T100	Chilled water in temperature
M-2	ChilWtrOut	MCS-T100	Chilled water out temperature
M-3	Suct Psi	MCS-200	Suction PSI
M-4	Disc Psi	MCS-500	Discharge PSI
M-5	OilSumpPsi	MCS-500	Oil sump pressure
M-6	OilFeedPSI	MCS-500	Oil supply pressure
M-7	Suct Tmp	MCS-T100	Suction temperature
M-8	Disc Tmp	MCS-T100	Discharge temperature
M-9	Mtr Flt	Digital	Detects phase loss, phase reversal, high motor temperature & high discharge temperature
M-10	EvapRefTmp	MCS-T100	Evaporator refrigerant temperature
M-11	CndWtrIn	MCS-T100	Condenser water incoming temperature
M-12	CndWtrOut	MCS-T100	Condenser water leaving temperature
M-13	ChwFlow	Digital	Verifies that the cooling loop pump is running
M-14	Phaseloss	Digital	Phase loss: phase imbalance
M-15	R/S Hand	Digital	Run/Stop/Hand Switch
M-16	Emg/Stop	Digital	Emergency stop switch
1-1	CmpProof	Digital	Verifies Delta has been pulled in.
1-2	Amps A	MCS-CT500	Reads amp draw on leg 1
1-3	Amps B	MCS-CT500	Reads amp draw on leg 2
1-4	Amps C	MCS-CT500	Reads amp draw on leg 3
1-5	Mtr Tmp1	User Defined	Reads the motor temperature on winding 1
1-6	Mtr Tmp2	User Defined	Reads the motor temperature on winding 2

MCS RTHA/RTHB Standard Point List

Sensor Inputs

1-7	Mtr Tmp3	User Defined	Reads the motor temperature on winding 3
1-8	Volts A	User Defined	Volts phase A
1-9	Volts B	User Defined	Volts phase B
1-10	Volts C	User Defined	Volts phase C
1-11	Cnd Flow	Digital	Verifies that the condenser water pump is running
1-12	Spare 1-12	Spare	Sensor input not used
1-13	Spare 1-13	Spare	Sensor input not used
1-14	Spare 1-14	Spare	Sensor input not used
1-15	Net R/S	BMS Run	Building Management interface Run/Stop
1-16	NetTrgtRst	BMS CW Rset	Building Management interface target reset
2-1	Mtr Tmp 1&2	User Logic	Highest temperature between winding 1 and winding 2
2-2	Mtr CtlTmp	User Logic	Highest motor temperature between all windings
2-3	SuctSprHt	User Logic	Suction superheat
2-4	Evap Apr	User Logic	Chilled water out temperature minus Evaporator refrigerant temperature
2-5	Ctrl Flow	User Logic	Monitors the chilled water and condenser flow

RTHA/RTHB Information

Please visit our website for a fillable form that you can email to: sales@mcscontrols.com

Company: _____ Phone: _____

Name: _____ Title: _____ Email: _____

Mobile: _____ Site: _____

Model Number	Serial Number	Refrigerant Used	Full Load Amps of Compressor

1. **Model of existing Panel:**

2. **What is the Starter Type?** **Are we monitoring the Transition OK or Starter Fault?**

a. Does the Compressor have a remote starter? Yes No

3. **Is there a Variable Frequency Drive?:** What is the VFD Make and Model? Make: _____ Model: _____

a. Will the VFD be hardwired to MCS controls, over MODBUS or both?

b. If you are using a VFD other than a Yaskawa VFD, do you need MCS to control the VFD Enclosure Temperature and Fans? Yes No

3. **What protocol will be used for Building Management communication?**

4. **Will Phase loss need to be monitored?** Yes No **How would you like the pressures to be displayed?**

5. **What kind of Hot Gas Bypass is present?**

6. **Is MCS controlling Pumps?** Yes No

a. **How will the Chilled Water Pump(s) be wired?**

b. **How will the Condenser Water Pump be wired?**

3. **Is MCS controlling Condenser/Evaporator Isolation Valve?** Yes No BMS

4. **What Main Voltage is being supplied to the unit?** Voltage: _____ Is MCS monitoring Main Voltage? Yes No

5. **What is the Control Voltage being supplied?** Voltage: _____

6. **What is the 'RUN LOAD AMPS' (FLA)** **COMP 1:** **COMP 2:**

7. **Will the Chilled/Condenser Water Flow be measured by Flow or Differential?**

8. **Will Ambient Temperature need to be monitored?** Yes No

COMMENTS (is there any other information we should know?):



5580 Enterprise Pkwy., Fort Myers, FL 33905

Office: 239-694-0089 • Fax: 239-694-0031

www.mcscontrols.com